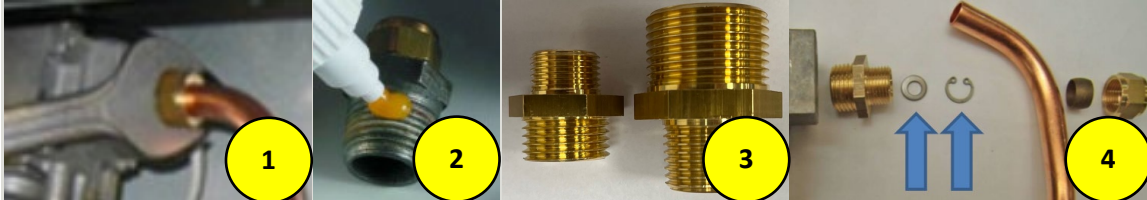


Vervangings- en afstelinstuctie XR/XR+/HR GASBLOK GA3000

A Vervang gasblok:

1. Verwijder het oude gasblok;
2. Breng afdichtingsvloeistof aan;
3. Plaats de juiste messing bus
4. Plaats eventuele ringtjes in de oude bus terug



NA VERVANGEN GASBLOK; GASBLOK AFSTELLEN !!!

B. Stel gasblok af

WAARSCHUWING!

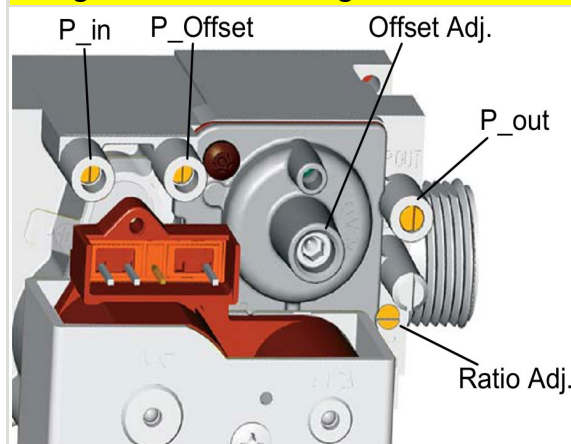


Voor de juiste CO₂ waardes raadpleeg de handleiding of label. Als beide ontbreken neem contact op met uw leverancier.

LET OP!

Als het toestel niet wil ontsteken kunt u eventueel met duim en wijsvinger de luchtopeningen van de gas/luchtmenger op de inlaat van de premix ventilator dichthouden tijdens het ontsteken. Het mengsel wordt dan rijker en zal gemakkelijker ontsteken.

Corrigeer de CO₂ afstelling wanneer de afwijking groter is dan 0,3% in 4 stappen :



1. Controleer het CO₂ % in hoogstand

- Verlagen CO₂ % : draai de Ratio adjuster rechtsom (minder gas).
Verhogen CO₂ % : draai de Ratio adjuster linksom (meer gas).

2. Controleer het CO₂ % op Laagstand.

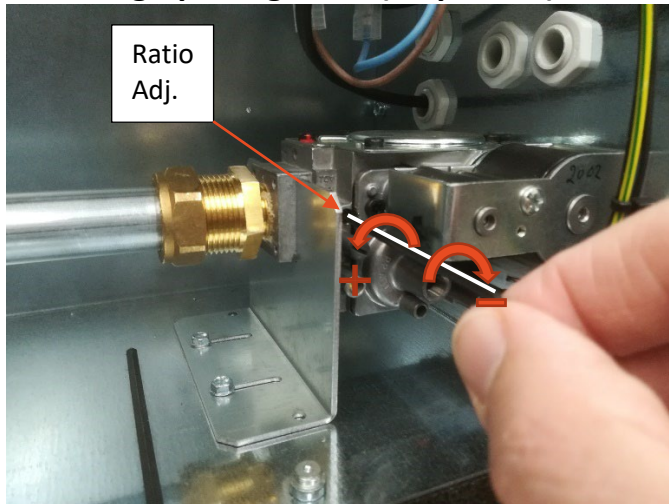
- (Het CO₂ % op in laagstand is lager dan op hoogstand)
Verlagen CO₂ % : draai de Offset adjuster linksom.
Verhogen CO₂ % : draai de Offset adjuster rechtsom

3. Ga terug naar hoogstand en corrigeer CO₂ % verder met Ratio adjuster.

4. Ga terug naar laagstand en corrigeer CO₂ % verder met de Offset adjuster.

Herhaal deze handelingen tot beide CO₂ waardes binnen de grenzen liggen.

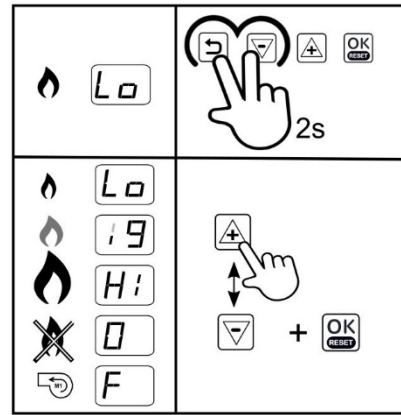
Instelling op hoogstand (stap 1 & 3)



Aardgas (G25.3, G20)
CO₂ %: 9,0% 0/-0.3%



Service

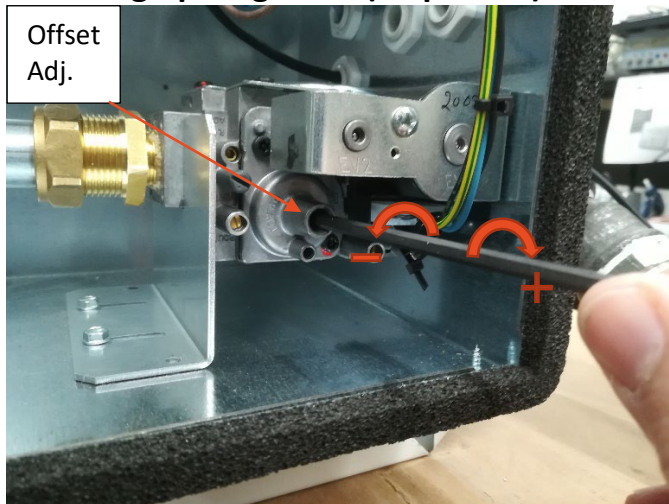


Service High

Propaan / Butaan (G31 / G30)
CO₂ %: 11,0% 0/-0.3%



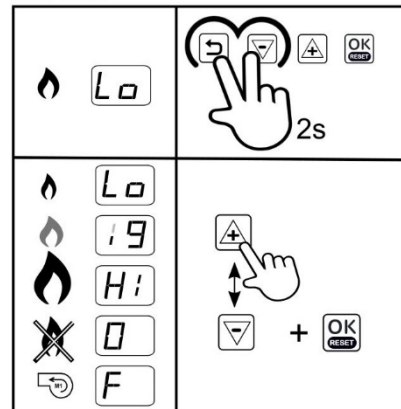
Instelling op laagstand (stap 2 & 4)



Aardgas (G25.3, G20)
CO₂ %: 8,5% +0,2/-0.2%



Service



Service Low

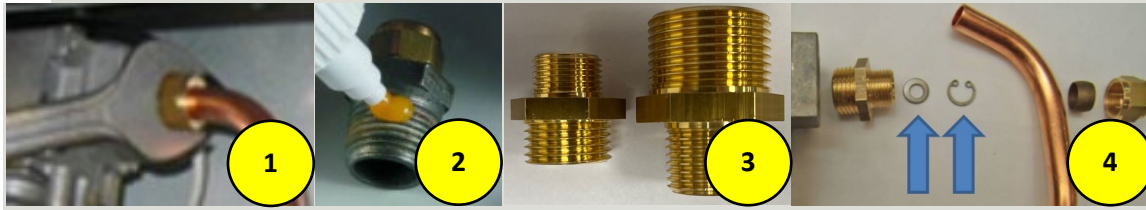
Propaan / Butaan (G31 / G30)
CO₂ %: 10,5% +0,2/-0.2%



Replacement and adjustment instructions XR/XR+/HR GAS VALVE GA3000

A Replace gas valve:

1. Remove the existing gas valve;
2. Apply liquid gas sealant;
3. Insert the right nipple;
4. Put back eventual washers.



AFTER REPLACEMENT OF GAS VALVE, ADJUSTMENT IS NECESSARY !!!



B. Adjusting the gas valve

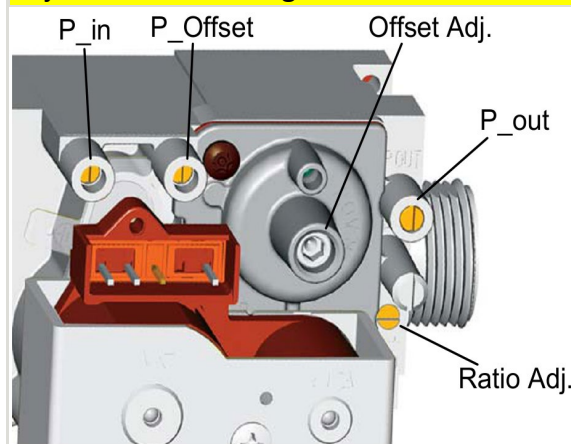
WARNING!

For the right CO₂ values, consult the user manual or the rating label on the appliance. If both are missing, please contact the supplier.

ATTENTION!

If the air heater does not ignite while sparking, close the air-openings of the gas-air mixer during ignition. Use your forefinger. The gas mixture will become richer and will ignite more easily.

Adjust the CO₂ settings if the deviation is more than 0,3% in 4 steps :



5. Verify the CO₂ % in high fire

- Reduce CO₂ % : turn the Ratio adjuster clockwise (less gas).
Increase CO₂ % : turn the Ratio adjuster counterclockwise (more gas).

6. Verify the CO₂ % in low fire

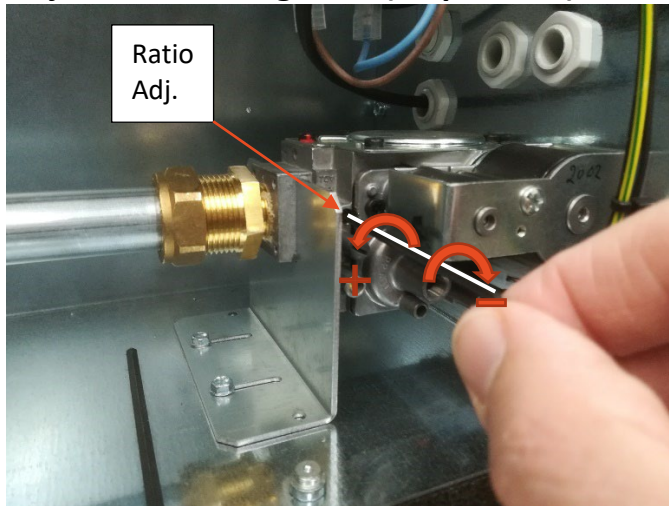
- (The CO₂ % in low fire is lower than in high fire)
Reduce CO₂ % : turn the Ratio adjuster counterclockwise
Increase CO₂ % : turn the Ratio adjuster clockwise

7. Return to high fire and adjust the CO₂ % with the Ratio adjuster.

8. Return to low fire and adjust the CO₂ % with the Offset adjuster.

Repeat the steps above until the CO% is within limits.

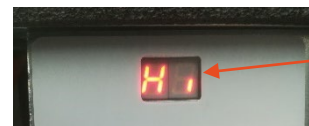
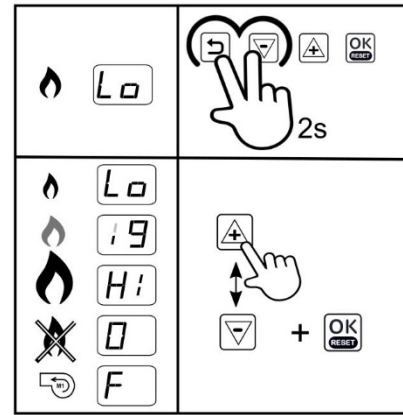
Adjustment on high fire (steps 1 & 3)



Natural gas (G25.3, G20)
CO₂ %: 9,0% 0/-0.3%



Service

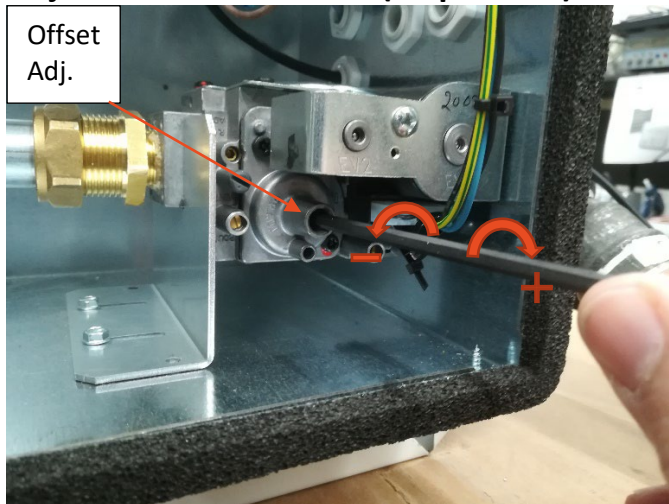


Service High

Propane / Butane (G31 / G30)
CO₂ %: 11,0% 0/-0.3%



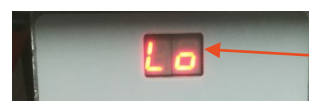
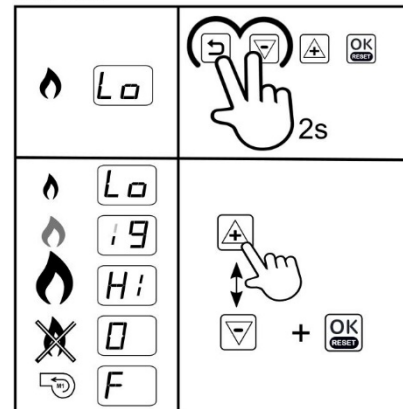
Adjustment on Low fire (steps 2 & 4)



Natural gas (G25.3, G20)
CO₂ %: 8,5% +0,2/-0.2%



Service



Service Low

Propane / Butane (G31 / G30)
CO₂ %: 10,5% +0,2/-0.2%

